

# ANCESTORS

Bartholomew County Genealogical Society

Jul - Sep Q3 2018

ISSN: 1933-5164

Vol 28 Issue 3

## 2018 BCGS Calendar

Unless otherwise noted, all sessions begin at 10:00 am in the Red Room of the Bartholomew County Public Library

### SATURDAY, JULY 21

#### Outing to Yellow Trail Museum & Research Center

Located on the Hope Square, the Yellow Trail Museum displays the rich history of Hope and the surrounding area. Join us there at 10:00am and wonder around the Museum and Research Center. We will have lunch (on your own) at Willow Leaves from noon to 1:00.

### FRIDAY/SATURDAY, SEPTEMBER 14/15

#### Library Annual History Days

BCGS table is usually located in the Indiana Room  
Volunteer to help at our booth or just come visit !

### SATURDAY, OCTOBER 20

#### S.K.I.L.L.S.: ORGANIZING YOUR GENEALOGY

Facilitators: Toni Whiteside and Heather McDonald  
Sharing tips, success stories, and struggles in keeping genealogy materials organized. Bring your best tips to share! (Library Conference Room)

#### INSIDE THIS ISSUE:

<i>Highlights</i>	2
<i>-by Marcus Speer</i>	
<i>Human Geography</i>	3-
<i>-by Donna Kuhlman</i>	6
<i>The Great Influenza</i>	7-
<i>Outbreak of 1918</i>	9
<i>-by Bob Hobbs</i>	

### SATURDAY, NOVEMBER 17

#### DIVORCE: A 19<sup>th</sup> CENTURY EPIDEMIC

Presenter: Meredith Thompson  
Introduction to American divorce records and some of the resources available for locating a divorce case, including the history of American divorce laws and identifying areas that became known as "divorce mills" because of their willingness to grant quick divorces, like Indianapolis.

Editor's Note: Many thanks to all BCGS Board Members for their time and articles to make Ancestors the "Voice of BCGS" ! As a courtesy, and to insure the personal communication with each of you, their columns are not edited. Hope you enjoy !

## Highlights -by Marcus Speer

### PROGRAM MINUTES May 12, 2018

On the second Saturday of May (12), 12 members & 10 guests attended an excellent program provided by the Bartholomew County Public Library and BCGS. CIDIG (Central Indiana DNA Interest Group) moderated the Program: "Adding DNA Testing To Your Genealogy Toolkit."

After a welcome and introduction by Denise Anderson-Decina, two sessions were provided.

The first session, "Genetic Genealogy to Find Your Roots" was presented by Ann Raymont. Ann shared that the first thing one should do is get DNA testing. Your goal is to connect with new cousins who might have artifacts, stories, photos, family histories, leads, and/or additional sources. She recommended that after getting DNA testing that you should get extended family tested especially an older generation. After testing, (1) you should copy raw DNA data to other matching sites to find more cousins, (2) share your family tree, and (3) contact your best matches. Ann shared that ethnicity re-

sults from DNA testing are not accurate, and she shared some blog links that verified this.

After a break, the second session, "Connecting Family Trees to DNA Results" was presented by Angela Guntz. Angela shared the follow goal: "Downloading a GEDCOM file and raw DNA files." Before starting, Angela suggested that you create a folder on your desktop to store all DNA data, documents, etc. She recommended that you "always, always, always protect living people's identity!" It was also suggested that if your family tree is large to create a new public DNA tree with only direct ancestors (back to great-great grandparents). It is important to name this DNA tree in such a way that it can be easily identified as a "DNA" tree. This same tree can then be uploaded to many different sites.

Closing Remarks were given by CIDIG Moderator: Denise Anderson-Decina. For more information contact: [CIDNAGroup@gmail.com](mailto:CIDNAGroup@gmail.com)



# CARVED IN STONE

-BY DONNA KUHLMAN

## HUMAN GEOGRAPHY In Bartholomew County, Indiana

An elementary education teaches us *physical* geography: land masses, rivers, mountains, plains and forests; and *political* geography, as well: nations, states, counties, cities and towns, and the mapping constructs of latitude and longitude. *Human* geography is an analysis of the transportation and trade routes that underlie the development of villages, towns and cities; not simply “what, when and where,” but “why.”

At the most basic level, trade (and consequently town development) occurs where one route intersects another. John Tipton and Joseph Bartholomew (and others) rode through the White and Driftwood River valleys in the spring of 1820, their mission to select a central site for a new state capital. Tipton made note of the “good land, good water and timber,” here, and was one of the first buyers when the land became available for purchase in August 1820. He built a house yet that fall, on a speck of high ground at the confluence of the Flat Rock and Blue Rivers. The next spring, John Lindsey was granted a license to operate a ferry on the river, indicating traffic, and economic opportunity.

*Bartholomew County in 1836  
Brown County was formed out of Bartholomew  
and Monroe Counties, April 1, 1836.*

## THE RIVER ERA

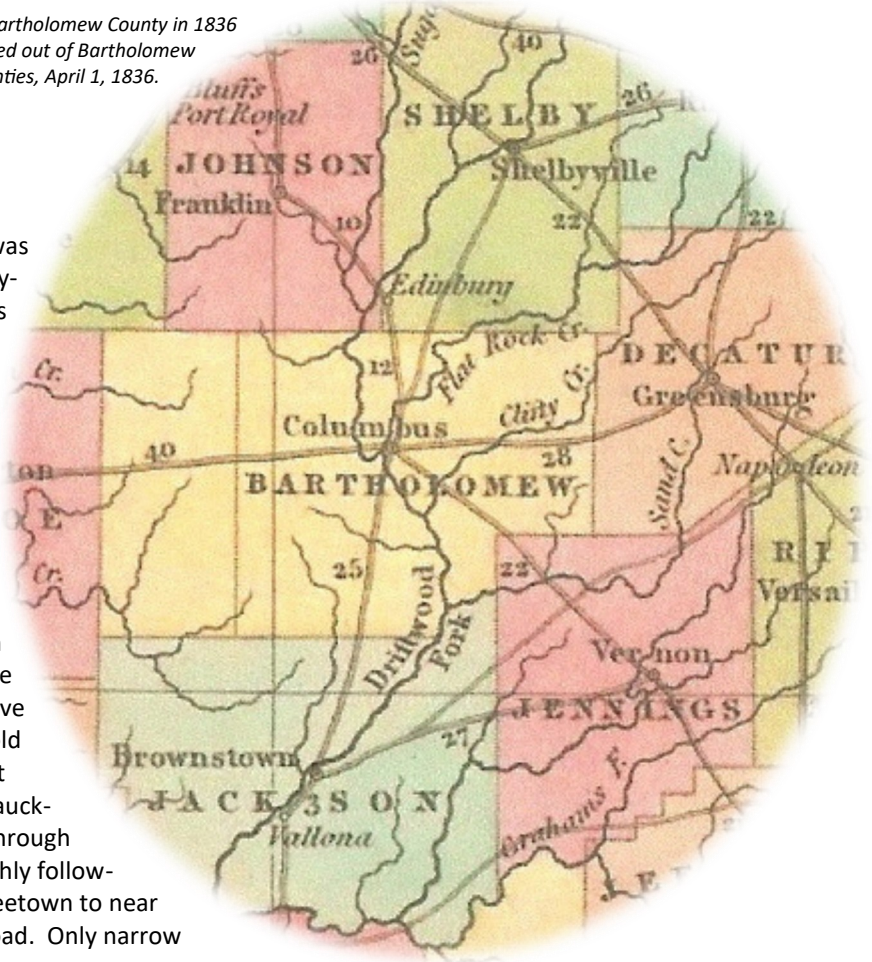
In Bartholomew County’s earliest days, the river was the principal avenue of commerce. Almost anything that could be sold—early on this was furs and timber—was shipped away on flatboats. White River at Columbus was the head of year-round navigable waters.

### Mauxferry Road

The early ferry connected the tiny new village of Columbus with the oldest road in Bartholomew Co., the Mauxferry Road. Just west of the city, a few miles of lonely country road still carries the Mauxferry name, but it marked the path of an ancient Indian trail, linking the Ohio River with the Great Lakes. Though little more than a primitive trace through the dense forest, it connected the old capital at Corydon with the planned new capital at Indianapolis. Originating at Mock’s Ferry (now Mauckport) on the Ohio River, the road ran northward through Corydon, Salem, Brownstown and Freetown, roughly following the path of modern day Indiana 135. From Freetown to near Columbus, Indiana 58 traces the old Mauxferry Road. Only narrow county roads now mark the old trail on to Franklin.

### Madison Road

The town of Madison was incorporated in 1809, at yet another intersection, that of the Ohio River and the Old Michigan Road. A new road soon led northwest, from Madison to Vernon in Jennings Co., and on northward to the site of Columbus. From these early beginnings, many more new roads were soon carved out, a webwork of pathways connecting the new towns rapidly springing up in southern Indiana.





# CARVED IN STONE

## HUMAN GEOGRAPHY (CONT)

### Greensburg Road

Decatur Co. was established in 1822, and Greensburg laid out the same year. Within ten years—probably much sooner—a road had been hacked out, connecting it with Columbus. Newbern was laid out in 1832, and became a busy, flourishing town with stores, a mill, and a hotel. It does not appear today to be a crossroads, but in fact it was at the intersection of the Greensburg Road, and another road connecting Scipio, on the Madison Road, with Shelbyville—which was also laid out in 1821.

Hartsville (1832) was established, “for the convenience of a post office and the benefits of trade,” as stated in the 1888 *History of Bartholomew County*. In 1850, the Hartsville College was established, operated a number of years until it burned and was not rebuilt. The road into Columbus from Hartsville came to be called the Hartsville Pike, which ran south of Clifty Creek. A vestige of it remains today, now officially country road 50N, out to Otter Creek Golf Course.

Hope was established as a Moravian settlement by Martin Hauser, in 1830. A local road, the Hope Pike, ran north of Clifty Creek, and connected Hope to Columbus. This road ran out present day 25<sup>th</sup> Street, to Petersville (the town not established until much later, 1874); the road then zigzagged north and east to Hope.

Burnsville (1845) lay on the Scipio Road, and was intersected by a road eastward to Westport as well as the nearby Legal Tender Road leading to Elizabethtown.

### Shelbyville Road

Yet another early road, in place well before 1836, led directly from Columbus to Shelbyville. Now scarcely recognizable as a throughway, this road ran in part on what is now Marr Road, winding its way to the town of Flat Rock in Shelby Co., then north-northeast into Shelbyville.

Another early town in that vicinity was St. Louis, settled about 1829. A fierce competition arose between St. Louis and Hope (originally called Goshen) over the establishment of a post office. Less than two miles apart, Goshen prevailed, renamed itself Hope, and received its first mail in 1834.

### Rockford Road or Driftwood Valley Pike

An early “local” road ran directly south, along the west side of White River into Jackson Co. to the “rock ford,” a shallow crossing with a firm stone bottom. The village of Augusta is said to be the earliest town in the southern part of Bartholomew Co., surveyed by John Tipton in 1823. The site is now marked only by two large brick houses on Indiana 11; and Thompson cemetery, the earliest marked burial made in 1823.

There was another early village, east of Jonesville, and very close to the river. Like Augusta, it was never platted, so no formal records document its existence, other than deeds for a cluster of small residential tracts. Its name is lost to history, although there was a “Bethel” church congregation. There is a cemetery—and nothing else at all—left to mark the site in the middle of cultivated farm ground. The earliest marked grave there is a Smith child who died in 1833; but the patriarch Henry Smith, who died in 1826, may well be buried there, too.

### Reddington or Brownstown Road

Another local byway ran down the east side of White River, a serpentine country lane that follows the southern extension of modern day Gladstone Avenue, and runs south and east, through Azalia, crossing Sand Creek, and on to Reddington in Jackson Co., then westward to Brownstown.

Azalia (1831) was established as a Quaker settlement, and a Society of Friends Church remains active there. Though there were a few early mills and other small business enterprises ventured, the town remained small and was principally there “for the convenience of a post office and the benefits of trade,” as described elsewhere.

Bethany and Moore’s Vinyard were both begun in the southwestern portion of the county about 1849. Bethany was renamed *South Bethany*, to obtain a post office. Moore’s Vinyard, never officially platted, was renamed Ogilville before 1893, in honor of the Ogilvie family residing in the area.

Waymansville (1849) was established at the intersection of the old Mauxferry Road, and the road running eastward to connect with the Rockford Road.

Another early business that the rivers fostered was milling. The settlement of Lowell Mills was the site of an early village on Driftwood River (founders were from Lowell, Massachusetts, famed for its milling industry.) Cormantown, named for Jacob Corman, was another early mill site, on Flat Rock River, west of Clifford. The 1860 census identifies Cormantown as “Haw Patch City,” a grandiose name for a village already fading away. Before the railroad, it had several busy industries and numerous residents.



# CARVED IN STONE

## HUMAN GEOGRAPHY (CONT)

### THE RAILROAD ERA

Great change was in the offing when plans were announced to bring the railroad from Madison to Indianapolis, passing through Columbus. The first train arrived on July 1, 1844, amid much celebrating. Elizabethtown was laid out the following summer. A couple of other towns were begun & failed along that same stretch—Goldsboro (or Wigg's Switch) and Shawneetown. These may have simply served as brief "rail heads," as the railroad-building advanced through the countryside, their purpose and usefulness voided when the line was extended into the city. (At one time, Columbus hotels advertised stage service between the town and the nearest rail head.) Elizabethtown, however, had the advantage of being an intersection, though you'd scarcely recognize it now. The road that we know as Indiana 9 cut down through where Quarry Ridge golf course is now, then over part of Legal Tender road, across the old Madison State Road (Indiana 7), then west to Elizabethtown and south to Jackson County on what is now US 31. Before US 31 was built in the 1940s, that southern route was all part of Indiana 9. It wasn't coincidence that this road's intersection with the Madison Road was the location of an early inn (at the flashing traffic light, on Indiana 7, east of E-town.) After the railroad came, the Madison Road lost some of its importance, and commerce and prosperity moved over to Elizabethtown.



As the railroad extended north, so did town development. Taylorsville was platted in the fall of 1846, and became a busy shipping point for the northern part of the county. Edinburgh prospered early, likely because it was the intersection of the old Mauxferry Road, and east-west routes from Greensburg to Morgantown—the old Vandalia Road and the Williamsburg Road.

The second railroad line to arrive was from Jeffersonville, in 1851, and a series of new towns were established. These were Jonesville, in March of 1851, Walesboro in June, Bannersville in August, Waynesville in October. The old town east of Jonesville was soon deserted, some of its buildings hauled to Jonesville—on skid runners pulled by mule teams. Augusta's trade went to Waynesville. Bannersville was laid out a couple of months before Waynesville, only about a quarter mile away. But James Thompson kept a store at Augusta; when he laid out Waynesville, he moved his store *there*. Bannersville had a depot and platted lots with several homes; but it never thrived, and no trace of it remains. (Thompson died in 1856 and was buried in the old cemetery at Augusta.)

The town of Kansas was also established in this period, 1855, although it was some distance from the railroad, and never had much commercial activity. It was connected with Edinburgh by a turnpike road, an early sort of toll road.

The Cambridge City branch of the railroad soon followed, a line that ran from Columbus to Shelbyville and beyond. Clifford was platted in 1853. The old village of Cormantown, on the river, faded away, its factories moved to Columbus or elsewhere, and the local trade to Clifford. Cormantown's post office had stood on the old Shelbyville Road (now the crossroad at Marr and county road 450N.) But Clifford was so successful that the old post office was abolished and a new one opened in Clifford in 1855. As had occurred elsewhere, whole buildings were transported from Cormantown to Clifford. Floor joists that ran the length of the structures served as runners, drawn by mules or draft horses. Only one of these was still standing in 2010. Further north, St. Louis Crossing (1864) drew trade away from Old St. Louis.

A handful of other towns were attempted around the county, hopeful ventures, but mostly in locations too remote for success. These were New Lebanon (1829), Camden (1832), New Warsaw (1835), and Mt. Sidney (1835). Later came Taylorsburg (1850), Hagersville (1851), and Farmers' Town (1855); Deer, Macedonia, Beaver, and Camden. All eventually vanished, most barely more than a speculative dream to begin with.

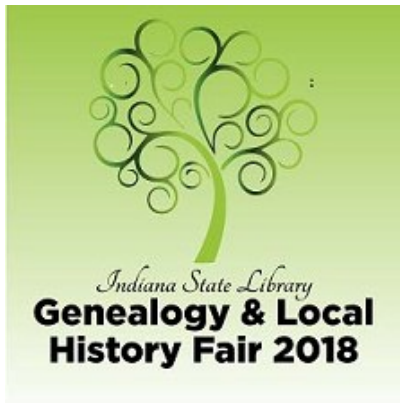


## CARVED IN STONE

### *HUMAN GEOGRAPHY (CONT)*

In the early 1890's, a spur rail line was laid from Elizabethtown to Westport, and the village of Grammer was soon laid out. There had been another village, called Plumsock, just to the south and east, on the old Scipio Road; Plumsock also became a casualty of modern times and shifting transportation routes, its site abandoned and residents moved away to greener pastures. By the 1920s, all that remained were crumbling foundations and bits of broken pottery.

The processes that made these changes in our county's geography are still very much in action. In the 19<sup>th</sup> century, transportation and therefore commerce shifted from the rivers to the railroad. In the 20<sup>th</sup> century, it shifted again, from the rails to the federal highways in the 1940s, and yet again to the interstate system in the 1960s and 70s. The expansion of business near the interstate exits at Taylorsville and Westhill is simply evidence of an evolving process. Like the meandering and sometimes unexpected changes in the course of White River, the course of commerce shifts whenever—and wherever—the opportunity arises.



#### **Indiana Genealogy & Local History Fair**

Indiana State Library

Saturday, October 27, 2018

10:00am - 3:30pm

See Indiana State Library website for more details

### ***Welcome to Our New Members :***

**KATHRYN DOOLY HOLTZ OF KANSAS CITY, MISSOURI**

**FRAN HOLT OF GEORGETOWN, TEXAS**

**RESEARCHING: MALOY, MELOY, MOLLOY, MALLOY, HICKEY,  
GAFFNEY, AND MURRY**



# Tripping MY ROADS Over

-by Bob Hobbs

## THE MOTHER OF ALL PANDAMICS: The Great Influenza Outbreak of 1918

A couple of summers ago I met up with a few close high school friends while we were all visiting the town where we used to call home. Now we all live in other states: Wisconsin, California, Missouri....Indiana. We had all sung in a special choral group at Benton Consolidated High School in Franklin County, Illinois and had gathered with other members of the group to honor our chorus teacher, who was now in her 90s and residing in an assisted-living facility in a nearby town.

On our way back from performing for her, we visited mutual friends and stopped at the Masonic and Odd Fellows Cemetery. This is the final resting place of some of our teachers, classmates, and family members. One of my friends suggested going into the oldest section... one on the far south end I had never visited before. We all got out of the car to assist him in finding the grave of a distant relative that he thought to be buried in a particular area.

We scattered and I happened upon a whole section where everyone had died in 1918. At closer inspection I noticed that it was members of one family here, members of another family there. They were all children, teens and/or young adults. The conclusion I came to was they were all victims of influenza. This resulted in my thoughts turning to my great uncle, my maternal grandmother's little brother, McAllister Albert Mosley.

Before I share with you that story, let's examine what was happening 100 years ago:

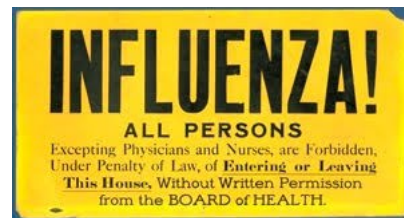
### The Great Influenza Pandemic of 1918.

It is still being debated where this deadly plague originated. Those offering an opinion cite China and that it was spread by means of global trade. Others pinpoint the origin to a military base in Kansas. At the time, the outbreak was referred to as The Spanish Flu.

The reason for this was that World War I was raging in Europe and the fact that a deadly disease running rampant through the military installations was looked upon as a demoralizing event for the countries who had soldiers fighting in the war. Among these countries news of this "Spanish Flu" was not widely reported. Spain, on the other hand, who was not involved in the war, freely reported the outbreak and its rapid spread and was therefore inaccurately associated with the origin. There was even reporting among some newspapers that suggested that it was a result of biological warfare.

There are some estimates that one third of the world's population was infected and that more than 2.5% of those died from it often from complications of pneumonia. In past influenza outbreaks, those most susceptible were the young and the old and was fatal in 0.1% of cases. However, in this outbreak 20 to 40-year-olds, who are usually the least likely to succumb, made up millions of the fatalities. Why were young adults at the time so much more susceptible is rather difficult to explain. To put it in the least technical way possible, let's just say that in the early 1900s there was an outbreak of a "Russian flu" that many of these young people contracted and survived. As a result they developed immunities that would help protect them if this stain ever surfaced again. Unfortunately for them, the so-called "Spanish Flu" was a completely different strain. They had survived the earlier flu, but it actually left their bodies more likely to be unable to fight the new strain.

Medical practices at the time did little in helping curb infection. When an infected person sneezes or coughs, more than half a million virus particles can be spread to those within close proximity. I remember seeing a documentary years ago that offered a memorable analogy to demonstrate their ineffectiveness. It stated that everyone was encouraged to wear a mask that covered their nose and mouth to prevent transmission from one person to another and that practice was "about as effective as keeping dust from penetrating chicken wire." The close quarters and massive troop movements during World War I increased transmission. Modern transportation systems used by sailors, soldiers, and civilian travelers helped spread the disease. The new flu was found in remote islands of the Pacific as well as the Arctic and resulted in 50 to 100 million deaths, which was three to five percent of the world's population.

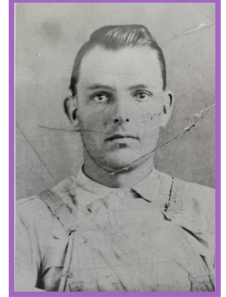


# Tripping Over My Roots

Cont.

My great-grandparents Henry Rite Mosley (1879-1963) and Gertrude Copeland (1886-1969) were married on May 28, 1905 at 10:00 a.m. by a Justice of the Peace in Barlow, Kentucky. Henry had been on the porch of his home when Gertrude passed by among a group of girls. He pointed to her and turned to his mother and said, "That's the girl I'm going to marry!" At the time he was working as a barrel maker for a local flour mill. Later he would become general carpenter foreman for the U.S. Government constructing locks on the Ohio River from Louisville, Kentucky to Grand Chain, Illinois.

*Gertrude Copeland, 19 and Henry Mosley, 25 in 1905, about the time of their marriage.*



On Thursday, September 6, 1906 at 6:00 p.m. my grandmother, Constance Lorene Mosley was born in a new two room house beside the mill that employed her father. Her name was chosen because her mother had been reading a weekly serialization of a novel in the newspaper where the heroine's name was Constance. The "Lorene" was after a friend and neighbor, Lorene Telford. For reasons that will remain a mystery, she would always be known as Lorene. The exception was when she later appeared in lead roles in her high school plays and operettas, where she thought Constance was a more appropriate and glamorous stage name. It was the name that appeared in the programs.



She had been told she "resembled a white-haired, blue-eyed doll" when she was little and didn't know how she got blue eyes since both her parents had brown eyes. She often wondered if her grandmother had had blue eyes and if that's how she got hers.

*Constance Lorene looking like a "white-haired, blue-eyed doll" at three months.*

Lorene remained an only child until she was nine years of age and thoroughly enjoyed the attention that distinction brought. To say she was spoiled was probably a great understatement. When her little brother McAllister Albert was born, that all changed.

*Lorene being spoiled with her own goat cart*



I remember my grandma telling me about her reaction to him. The following quotes attributed to her are based on my memory of our conversations and the text of her writings to me.

*"I did not like him...at all! I was so jealous because the attention that I had gotten from my parents, other family members, and neighbors was now directed towards him. When he got big enough to get out of his crib my dislike of him grew even stronger. He wanted to follow me everywhere and he got into everything of mine. The final straw that broke the camel's back was when he got into my paper dolls and cut all their heads off!"*



*Little Mac looking rather seriously stern among the Iris leaves in front of chicken wire*

# Tripping Over My Roots

Cont.



McAllister Albert Mosley was born on February 21, 1914. I never got a chance to ask my great-grandmother how he got the name McAllister and my grandma never knew. She did know that his middle name Albert came from the middle name of my great-grandfather's half brother Hubert. McAllister Albert was known by most as Little Mac.

*McAlister Albert Mosley looking like a mini Albert Schweitzer in his pith helmet the summer of 1916*

"Little" was how he would forever be remembered. On November 10, at the age of 2 years and 9 months, he became ill and nineteen days later died. Grandma told me:

*"It pains me to admit this now, but at the time I was not the least bit sad he died. I felt bad only because I could see how much it hurt my parents to lose their little son. I had always wanted a sister, but I wonder under the same circumstances how I would have accepted her. Only years later when I was more mature and realized I was never going to have a sister was I truly sorry that Little Mac had died. I would always be an only child. I also realized that I should have treated him better. I have asked the Lord for forgiveness many times."*

*My great-grandma Gert, my Grandma Lorene,  
and my great-grandpa Henry at Little Mack's  
grave in Barlow, Kentucky*



My grandma always thought he had died of the flu and some of the pictures of him had written on them that he had died in 1918. This fed my earlier suspicion that he was a young victim of the influenza epidemic. I certainly "tripped over my roots" on this!

The theory he had died during this catastrophic world-wide event was eventually disproven. When I discovered Little Mac had DIED in 1916 and was not BORN in 1916 as previously cited, I had some doubts that the flu was actually his cause of death. If that were the true cause (and it surely could have been possible back then), it was not because of the epidemic of 1918. Only recently, thanks to Ancestry.com, was I able to view his death certificate. The cause of death, as noted by Dr. W. A. Page on November 29, 1916, was Bronchial Pneumonia with the secondary contribution listed as Cerebral Meningitis.

The mystery is now solved as to:

Why my great-grandparents lost their only son.

Why my grandmother lost her only sibling.

And why my mother and aunt never got the chance to call him Uncle Mac.

# *Bartholomew County Genealogical Society*

Membership year extends from Jan – Dec (includes 4 issues of ANCESTORS)

**1 year Membership: Individual (\$10) Couple (\$15)**

**Contact us ! Like us on facebook !**

**PO Box 2455 Columbus, Indiana 47202-2455**

**email: [bcgs47202@yahoo.com](mailto:bcgs47202@yahoo.com)**

**website: [barthgen.org](http://barthgen.org)**



## **Thanks for your Support**

### Board Members and Directors

*President: Becky Speaker*

*Secretary: Marcus Speer*

*Treasurer: Toni Whiteside*

*Membership: Robert Hobbs*

*Genealogist: Donna Kuhlman*

*Genealogist: Karen Loy*

*Newsletter Editor: Kim Ray*